

Disney DREAM

Disney's Believe



Genie from Aladdin and many of Disney's most beloved magic makers take a father on a magical journey to show him that anything is possible if you just believe.

4:00 P.M., 6:15 P.M. & 8:30 P.M.
IN THE WALT DISNEY THEATRE
DECK 3 & 4, FORWARD



Assistance available at the entrance on Deck 3 to the Walt Disney Theatre 30 minutes prior to show time.

PERSONAL NAVIGATOR

CASTAWAY CAY, SATURDAY, JUNE 23, 2012

Sunrise: 6:20 a.m. Sunset: 8:09 p.m. Evening Attire: Cruise Casual

All Ashore: 8:30 a.m.

All Aboard: 5:00 p.m.

Gangway: Deck 1, Midship & Deck 1, Aft



WELCOME TO CASTAWAY CAY

DEBARK TALK BROADCAST

Your Cruise Director, Natalie, presents important information, including U.S. Customs and Border Protection procedures. Tune in to Channel 5 of your stateroom TV. Please place your luggage outside your stateroom between 8:30 - 10:30 p.m. Thank you in advance for completing your comment card.

ART OF THE THEME SHOW TOUR

Meet at Meridian (18+), Deck 12, Aft, 2:30 p.m.

Join us on a guided ship tour and discover the ingredients that make the Disney Dream cruise ship one-of-a-kind.

MAKING OF THE DREAM

Evolution (18+), Deck 4, Aft, 3:00 p.m.

Learn about the latest and greatest innovations for the Disney Dream in this entertaining behind-the-scenes program.

FAMILY DREAM QUEST

Evolution, Deck 4, Midship, 7:30 p.m.

Enjoy the wildest and wackiest scavenger team event on the seven seas!

D TUNES FAMILY JAM

D Lounge, Deck 4, Midship, 9:45 p.m.

Find out what's HOT at this new dance party, featuring great Disney music, family dances, and a chance to win awesome prizes!

CRUISE STAFF FAREWELL

Evolution (18+), Deck 4, Aft, 11:15 p.m.

Join your Cruise Staff team and see our version of the funniest skit on the high seas, "If I Were Not Upon The Sea."

CHARACTER APPEARANCES



Character Meet & Greet
7:30 p.m., D Lounge

Don't forget your camera to capture those Magical Moments!

SEA YA' REAL SOON!

Mickey and some of his Disney friends invite you to join them in the ship's Atrium. You won't want to miss this very special farewell meet and greet. Bring your cameras!

Lobby Atrium, 4:15 & 10:15 p.m.



BINGO

\$10,000 FINAL MEGA JACKPOT BINGO

D LOUNGE
DECK 4, MIDSHIP

Pre Sales - 4:15 p.m., Game Starts - 4:30 p.m.

Join us for four cash prize games. If you cover your card in 46 numbers or less on the final game, \$10,000 could be yours! If not, we will still be playing for the highest cash prize of the cruise.

SENSES
SPA & SALON

GO SMILE
TEETH WHITENING

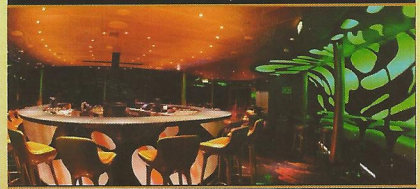
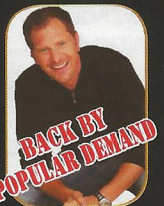
You can be up to six shades lighter for

ONLY \$149 for Singles
or \$258 for Couples.

EVOLUTION

Deck 4, Aft
Adult Exclusive Events
(Guests 18 and Older)

ADULT
CABARET
THE PHYSICAL
COMEDY OF
RON
PEARSON
10:45 P.M.



CRUISE STAFF FAREWELL
11:15 P.M.

Followed by
Evolution Nightclub with

DJ MARIUS
11:30 P.M. - 2:00 A.M.

Animator's Palate : Pacific Rim Cuisine
Enchanted Garden : Continental Market Cuisine
Royal Palace : French Dinner

DRINK
OF THE DAY

Bahama Mama (Alcoholic)
Coco Bali (Non Alcoholic)

WEATHER
FORECAST

Saturday: Partly Cloudy
High: 77° F/25° C
Sunday: Cloudy
High: 79° F/26° C

IMPORTANT NUMBERS

Health Center 7-1923
Medical EMERGENCY 7-3000
Fire/Security 7-3001

SHIP'S DIRECTORY

ENTERTAINMENT - LOUNGES - BARS

Outlook	Deck 14, Mid
Currents	Deck 13, Fwd
Meridian (18+)	Deck 12, Aft
Waves	Deck 12, Aft
Cove Café (18+)	Deck 11, Fwd
Evolution (18+)	Deck 4, Aft
The District	Deck 4, Aft
Skyline (18+)	Deck 4, Aft
Pink (18+)	Deck 4, Aft
687	Deck 4, Aft
D Lounge	Deck 4, Mid
Vista Café	Deck 4, Mid
Buena Vista Theatre	Decks 4&5, Mid
Walt Disney Theatre	Decks 3&4, Fwd
Bon Voyage	Deck 3, Mid

SHOPPING

Whozits & Whatzits	Deck 11, Mid
Sea Treasures	Deck 3, Mid
Mickey's Mainsail	Deck 3, Mid
White Caps	Deck 3, Mid

YOUTH ACTIVITIES

Edge (ages 11-14)	Deck 13, Mid
Disney's Oceaneer Lab	Deck 5, Aft
Disney's Oceaneer Club	Deck 5, Aft
It's A Small World Nursery	Deck 5, Mid
Vibe (ages 14-17)	Deck 4, Fwd

DINING

Palo (18+)	Deck 12, Aft
Remy (18+)	Deck 12, Aft
Cabanas	Deck 11, Aft
Eye Scream	Deck 11, Mid
Flo's Café	Deck 11, Mid
Frozone Treats	Deck 11, Mid
Animator's Palate	Deck 3, Aft
Royal Palace	Deck 3, Mid
Enchanted Garden	Deck 2, Mid

RECREATION

Goofy's Sports Deck	Deck 13, Aft
Arcade	Deck 11, Aft
AquaDuck	Deck 12, Aft
Nemo's Reef	Deck 11, Aft
Pools & Mickey's Slide	Deck 11, Mid
Quiet Cove Pool (18+)	Deck 11, Fwd
Senses Spa & Salon	Deck 11, Fwd
Midship Detective Agency	Deck 5, Mid
Jogging/Walking Track	Deck 4

GENERAL INFORMATION

Concierge Lounge	Deck 12, Fwd
Conference Center	Deck 5, Mid
Port Adventures	Deck 5, Mid
Vista Gallery	Deck 4, Mid
Shutters	Deck 4, Mid
Disney Vacation Club	Deck 4, Mid
Shopping Ashore	Deck 4, Mid
Future Cruise Sales	Deck 4, Mid
Preludes	Deck 3, Fwd
Guest Services	Deck 3, Mid
Health Center	Deck 1, Fwd

All shipwide announcements can be heard on Channel 1 of your stateroom television



Day Time	7:30	7:45	8:00	8:15	8:30	8:45	9:00	9:15	9:30	9:45	10:00	10:15	10:30	10:45										
FUN FOR ALL AGES	Midship Detective Agency Deck 5, Midship Kiosks until 11:00 p.m. Daily		Shuffleboard Available (Throughout the day) Deck 4, Promenade - Port & Starboard Side			Run Disney: Castaway Cay 5K (12+) Meet in 687 (Departs at 8:45 a.m.)			Island Power Walk/Stroller Fitness Meet at the Post Office at 9:30 a.m., Departs at 9:45 a.m.															
	Mini Golf Available Goofy Sports Deck			Rise and Shine Club Cove Cafe			Youth Activities Open House Oceaneer Lab >4:00 p.m.																	
JUST FOR ADULTS (18+)	Wake Up & Stretch Senses Fitness Center <7:00 a.m.		Body Sculpt Boot Camp (18+) Basketball Court (Fee applies)			Friends of Bill W. Outlook			Yoga On The Beach Serenity Bay															
CHARACTERS	For more details refer to the digital character board in the Lobby Atrium, or simply dial 7-PALS (7-7257) from any telephone onboard.										Daisy Post Office		Mickey Scuttles		Chip & Dale Post Office		Goofy Rustmore		Donald Gangway		Pluto Scuttles		Goofy Scuttles	
							Pluto Rustmore		Hook & Smeek Gangway		Minnie Scuttles		Daisy Post Office		Mickey Rustmore		Chip & Dale Post Office		Jack Sparrow Island Pathway		Lilo & Stitch Gangway			
BUENA VISTA THEATRE Deck 4 & 5 Midship	Disneynature: Chimpanzee - G																							
FUNNELVISION Deck 11 Midship	Bolt - G																							
LITTLE ONES	Youth Activities Open House It's a Small World Nursery						Nemo's Splash Zone Nemo's Reef 10:00 a.m. - 7:00 p.m.																	
OCEANEER LAB																								
SCUTTLES COVE							Volleyball						Sebastian's Musical Sea Search											
							Water Relays						Vacation Crafts											
TWEENS							Soccer						Whale Dig											
TEENS							Wild Side From 9:15 a.m. - 1:30 p.m.						Hangin' in the Hideout Teen Hideout											

Evening	4:00	4:15	4:30	4:45	5:00	5:15	5:30	5:45	6:00	6:15	6:30	6:45	7:00	7:15	7:30	
THE MAIN EVENT	Disney's Believe Walt Disney Theatre				Live Piano with Drew Cavendish District Lounge				Disney's Believe Walt Disney Theatre				Officer P... Lobby Atr... Disney Tri... D Lounge			
FUN FOR ALL AGES	Bingo Pre Sales		\$10,000 Final Mega Jackpot BINGO D Lounge			Disney Disco D Lounge			Family Superstar Karaoke D Lounge			Family Qu... Lobby Atrium Evol...				
JUST FOR ADULTS (18+)	Secrets to a Flatter Stomach Senses Spa & Salon			Disney Vacation Club Presentation Evolution			Club 18*21 Mini Golf Sports Deck			ESPN Dream Team Draft Day 687			Name tha... 687 Live Guitar with Dav... Quiet Cove			
CHARACTERS	Sea Ya' Real Soon Lobby Atrium				Mickey Dk 4, Balcony				Mickey Dk 4, Balcony							
BUENA VISTA THEATRE Deck 4 & 5 Midship	BRAVE - PG DOLBY 3D <Starts at 3:30 p.m.															
FUNNELVISION Deck 11 Midship	Jungle Book - G						Fantasia 2000 - G						Ci...			
OCEANEER CLUB	Movie Time		Story Time		Youth Activities Open House "Big Top Fun Fest" 5:15 p.m. - 6:00 p.m.				Connect 4 Challenge		Create a Postcard					
	Monsters Games Galore				Free Time		Magic Playfloor		Memory Wall		Magic Playfloor		Free Time			
OCEANEER LAB	Anyone Can Cook				Dinner				Drawing Time		Board Games		Animation Creations			
	Card Game Challenge				Free Time		Magic Playfloor		Open "Mike" Night		Crazy Crafts					
EDGE	Just Dance Challenge				Sports Deck				T-shirt Making				Brains & Brawn Final			
VIBE	Sports Deck				Sun Deck/Smoothies				Super Sloppy Science				Disney Trivia/NBA 2K12			

SOLVE IT! SERIES

Whale Dig
10:00 a.m. & 11:00 a.m., Monstro Point
Our island paleontologist leads us in the excavation of a giant whale skeleton and other fossilized treasures!

YOUTH ACTIVITIES OPEN HOUSE

Big Top Fun Fest
5:15 p.m., Oceaneer Club
It's the greatest show on Earth. Come re-discover the circus Disney style with clowns, jugglers and classic Disney cartoons.

Youth Activit

Ma
5:30
6:30
Have
Magi

11:00	11:15	11:30	11:45	12:00	12:15	12:30	12:45	1:00	1:15	1:30	1:45	2:00	2:15	2:30	2:45	3:00	3:15	3:30	3:45
				Character Dance Party Gazebo 1				Family Whale Dig Monstro Point				UEFA: Spain vs. France 687 (Subject to satellite availability)							
				Crab Races Gazebo 1				Crab Races Gazebo 2				David Kenny on the Guitar Gazebo 1				David Kenny on the Guitar Gazebo 1			
				Basketball Free Throw In Da Shade Games Pavillion				DJ Marius Spins on the Island Gazebo 1				Sports Simulator Available for Booking Sports Deck, 13, Aft <1:00 p.m. - 6:00 p.m.							
Club 18*21 Volleyball Sports Beach								Basketball Free Throw In Da Shade Games Pavillion				Club 18*21 Free Throw In Da Shade Games				Making of the Dream Evolution			
				Donald Deck 12				Chip/Dale Gazebo 2								Minnie Deck 12			
				Character Dance Party Gazebo 1								Hook & Smees Gangway				Stitch Deck 12			

Avengers - PG-13 DOLBY 3D				The Muppets - PG				BRAVE - PG DOLBY 3D							
Mary Poppins - G				Virtual Tours				The Emperor's New Groove - G				Aladdin - G			

Youth Activities Open House																							
How Wet Can You Get?		Circle Of Fun		Lunch		Circle Of Fun		Water Relays		Circle Of Fun		Buckets of Fun				Sand Soccer							
Treasure Hunt		Circle Of Fun		Lunch		Circle Of Fun		Sand Castle Competition		Circle Of Fun		Caribbean Beach Party				Capture the Flag							
Whale Dig		Circle Of Fun		Lunch		Circle Of Fun		Volleyball		Circle Of Fun		Hide and Seek				Water Games							
Lunch				Basketball (Meet on Runway)				Sand Soccer at Sports Beach				Invade Teen Hideout				Tween Pool Party in Vibe							
Sand Soccer/Foosball Tournament Teen Hideout				Volleyball/Pelican Plunge Fun Teen Hideout				Lunch at Cookies Too				Tag Football/Cornhole Teen Hideout				Ultimate Frisbee/UNO Teen Hideout				Heading Back to Vibe			

8:00	8:15	8:30	8:45	9:00	9:15	9:30	9:45	10:00	10:15	10:30	10:45	11:00	11:15	11:30	11:45	12:00	12:15	12:30	12:45	1:00	1:15		
Trading		Disney's Believe Walt Disney Theatre				D Tunes Fam Jam D Lounge		SEA YA REAL SOON! Lobby Atrium															
Family Superstar Karaoke D Lounge				Family Superstar Karaoke D Lounge				High Society LIVE Lobby Atrium															
60's Tune		Live Piano with Drew Cavendish District Lounge				Georgetown Trio LIVE District Lounge		1821 Farewell Evolution		80's Music Challenge Evolution		Cabaret: Ron Pearson Evolution		Cruise Staff Farewell & Evolution Nightclub with DJ Marius Evolution									
Kenny				Live Guitar Quiet Cove				Georgetown Trio LIVE District Lounge		Georgetown Trio - After Dark District Lounge													
Minnie Dk 4, Balcony				Sea Ya' Real Soon Lobby Atrium																			

Disneynature: Chimpanzee - G				The Avengers - PG-13 in 2D									
Princess & the Frog - G				Angels in the Outfield - G									
Top Fun Fest		Let's Build a Fort		Explore Andy's Room				Toy Story Mania & Movie Fun					
Nemo's Sub Fun & Games		Circle Games		Family Fun Crafts		Pixie Crafts		Explore the Club					
Stitch's Adventure Squad		Glitter Crafts		Super Sloppy Science		Guess Who?		Paper Plane Competition		GaGa Ball			
Connect 4 Challenge		Piston Cup Challenge		Create a Postcard		POTC: Tides of Fortune		High School Musical Movie					
Dance Central		That's Hilarious		Ship Factor		Gender Wars		Info Swap/Slide Show		Farewell Dance Party			
That's Hilarious		T-shirt Signing		Pump it Up/ Smoothie Time		How Well Do You Know Your Counselor?		Bring It! Gender Wars		Slideshow/Info Swap			

Themed Experiences

PUMP UP! SERIES
Music Playfloor
 8 p.m., Oceaneer Lab
 5 p.m., Oceaneer Club
 Fun and explore the latest technology of the Playfloor!

WIN THE SPOTLIGHT SERIES
Open "Mike" Night
 6:00 p.m., Oceaneer Lab
 Participate in Mike Wazowski's Comedy School and a special show to help collect enough laughs to power up the city.

CREATE & INVENT SERIES
Piston Cup Challenge
 8:30 p.m., Oceaneer Lab
 It's Dinoco time and you're part of the pit crew! Design your own race car and see if you've got what it takes to end up in the Winner's Circle!

MORE TO ENJOY WHILE ONBOARD



VISIT THE FUTURE CRUISE DESK EARLY TODAY
Please visit the Future Cruise Desk, Deck 4, Midship, as early as possible today. The last day of the cruise tends to get busy in the evening, and we want to be sure you have the opportunity to save 10% on your next cruise, receive up to a \$200 onboard credit, and pay a reduced deposit! Tune to Channel 8 for details.

DISNEY VACATION CLUB® GROUP PREVIEW
Want to learn more about taking magical vacations year after year? Please see a *Disney Vacation Club* representative on Deck 4, Midship, or call 7-2805 from your stateroom phone for more information about our interactive group presentation.

SALON TASTER SPECIAL
Choose from scalp massage, European facial, hand treatment, sunglow make-over, hair treatment, eye-collagen treatment, foot & ankle massage and neck & shoulder massage.
Three for \$99, five for \$119 and eight for \$139.

PROTECT YOUR PURCHASES
Don't forget to activate your 60 day buyer's guarantee form for your purchases in Nassau. It's free and confidential. Pick one up at the Shopping Desk, Deck 4, Midship.

STAY CONNECTED WITH CELLULAR SERVICE
Cell phone and wireless PDA service is available in Guest staterooms through most plans. Pricing varies depending upon your wireless provider and usually includes International roaming rates.

EXPRESS WALK-OFF
Guests now have the option to take your luggage off the ship at your leisure once the ship has been cleared by the local authorities. You do not need to wait for your luggage to enter the terminal and there is no need to claim it inside the terminal building. Please note that no assistance with luggage is provided for this option.

SURF @ SEA
\$0.75 per minute, or save money by buying blocks of time. \$27.50 for 50 minutes, \$40 for 100 minutes and \$75 for 250 minutes. Wireless information sheets are available at Guest Services, Deck 3, Midship.
Please note: Due to satellite connectivity, onboard internet service will be noticeably slower than you may be accustomed to and may at times be interrupted or unavailable.

OPERATING HOURS

Arr-cade	24 HOURS	Health Center	9:30 A.M. - 11:00 A.M.
Aqua Duck	10:00 A.M. - 12:00 MID		4:30 P.M. - 7:00 P.M.
Basketball Court	12:00 A.M. - 6:00 P.M.	It's A Small World Nursery	9:00 A.M. - 12:00 MID
Disney's Vacation Club	6:00 P.M. - 10:00 P.M.	Marge's Barges	9:00 A.M. - 3:30 P.M.
Disney's Oceaneer Club	4:00 P.M. - 12:00 MID	Mickey's Pool	6:00 A.M. - 12:00 MID
Disney's Oceaneer Lab	9:00 A.M. - 12:00 MID	Mickey's Slide	10:00 A.M. - 7:00 P.M.
Donald's Pool	6:00 A.M. - 12:00 MID	Midship Detective Agency	8:00 A.M. - 11:00 P.M.
Edge	4:00 P.M. - 12:00 MID	Nemo's Reef	10:00 A.M. - 7:00 P.M.
Future Cruise Desk	8:00 A.M. - 10:00 A.M.	Port & Shopping Desk	6:00 P.M. - 7:00 P.M.
	3:00 P.M. - 10:00 P.M.	Quiet Cove Pool	6:00 A.M. - 12:00 MID
Golf Simulator	1:00 P.M. - 6:00 P.M.	Senses Spa Fitness Center	8:00 A.M. - 10:00 P.M.
Goofy & Max's Mini Golf	8:00 A.M. - 10:00 P.M.	Senses Spa and Salon	8:00 A.M. - 10:00 P.M.
Guest Services	24 HOURS	Shutters Photo Gallery	5:00 P.M. - 11:30 P.M.
Hair Braiding	5:30 P.M. - 9:30 P.M.	Sports Simulator	1:00 P.M. - 6:00 P.M.
		Vibe	4:00 P.M. - 11:00 A.M.

Dining Hours

Consumers who order raw or partially cooked, ready-to-eat food of animal origin, are hereby informed that the food is not sufficiently cooked to ensure its safety.

BREAKFAST

Early Bird Continental	
Cabanas, Port Side	7:00 A.M. - 7:30 A.M.
Cabanas Food Court	7:30 A.M. - 10:45 A.M.
Royal Palace	8:00 A.M. - 9:30 A.M.
Enchanted Garden	8:00 A.M. - 10:00 A.M.

LUNCH

Cabanas	12:00 P.M. - 1:30 P.M.
Cookies BBQ	11:30 A.M. - 2:00 P.M.
Cookies BBQ Too	11:30 A.M. - 2:00 P.M.
Filmore's Favorites	11:00 A.M. - 6:00 P.M.
Luigi's Pizzeria	11:00 A.M. - 6:00 P.M.
Tow Mater's Grill	11:00 A.M. - 6:00 P.M.

DINNER

Animator's Palette	5:45 P.M. & 8:15 P.M.
Enchanted Garden	5:45 P.M. & 8:15 P.M.
Royal Palace	5:45 P.M. & 8:15 P.M.
Tow Mater's Grill Buffet	6:00 P.M. - 10:00 P.M.
Palo & Remy (18+)	6:00 P.M. - 9:00 P.M.

(Reservation required & cover charge applicable)

LATE NIGHT SNACKS

Luigi's Pizzeria	9:30 P.M. - 12:00 MID
The District	10:45 P.M. - 11:45 P.M.

ADDED FEATURES

Beverage Station	24 HOURS
Eye Scream	11:00 A.M. - 11:00 P.M.
Room Service	UNTIL 1:30 A.M.

Bar Hours

Adults must be 21 and older to consume alcoholic beverages. Pre-book Beverage Tasting Seminars at Guest Services.

ON DECK

Cove Bar (18+)	12:00 P.M. - 11:00 P.M.
Cove Café (18+)	7:00 A.M. - 6:00 P.M.
Cove Café Wine Bar (18+)	6:00 A.M. - 12:00 MID
Currents	2:00 P.M. - 11:00 P.M.
Frozone Treats	11:00 A.M. - 11:00 P.M.
Waves	2:00 P.M. - 7:00 P.M.

LOUNGES

687	5:00 P.M. - 9:00 P.M.
687(18+)	9:00 P.M. - 12:00 MID
Bon Voyage	3:00 P.M. - 12:00 MID
D Lounge	DURING SHOWTIMES
District Lounge	4:00 P.M. - 9:00 P.M.
District Lounge (18+)	9:00 P.M. - 12:00 MID
Evolution (18+)	10:00 P.M. - 2:00 A.M.
Meridian (18+)	5:00 P.M. - 12:30 A.M.
Outlook	SUNSET TIME
Pink (18+)	5:00 P.M. - 12:00 MID
Skyline (18+)	5:00 P.M. - 12:00 MID
Vista Café	7:30 A.M. - 11:00 P.M.

PROFESSIONAL PORTRAITS - LOBBY ATRIUM



Archway - Six Guests maximum
Grand Staircase - Groups accommodated
5:00 p.m. - 6:00 p.m. & 7:00 p.m. - 8:30 p.m.
Create a personal storybook of your cruise to share with family & friends.
Photobook orders close at 10:00 p.m.

*Please note that photos are available for viewing on our interactive photo kiosks approximately three hours after being taken and are only available for purchase during this cruise.



For all your Castaway Cay bookings today, visit Marge's Barges for excursions and Gil's Fins and Boats for recreation rentals. Perhaps try snorkeling in our sheltered lagoon, fly high in the sky during a parasailing adventure or get up close with friendly stingrays in a fun and safe environment at Castaway Rays.
As always, limited spaces are available - so book early!

SHOPPING

ISLAND MEMORIES

Exclusive T-shirts, sweatshirts, magnets and postcards available at She Sells... and Everything Else & Buy the Seashore. Also, personalized leather bracelets and key chains at Buy the Seashore.

GREAT GIFT IDEAS FOR FAMILY AND FRIENDS!

With every \$30.00 spent in the stores, you can purchase a DCL beach towel for just \$14.95. With every \$50.00 spent in the stores, you can purchase a DCL rolling duffel bag for just \$19.95. Available at all merchandise locations while supplies last!

CELEBRATE YOUR SUCCESS!

Castaway Cay Exclusive 5K T-shirts! Did you do the 5K run today? If so, why not get the shirt to celebrate your achievement? Exclusive to Castaway Cay's Buy The Sea Shore.

DON'T FORGET YOUR DUTY FREE

A great range of jewelry, fragrances and liquor - all at competitive prices. Buy onboard and we will package your item for the journey home. Whitecaps, Deck 3, Midship.

JOIN IN THE EXCITEMENT!

It's your chance to own a piece of original Disney art - inks, line art and other unique art pieces. This cruise, why not place a silent bid on any of the these items? Bidding will close at 6:00 p.m. on the final day of the cruise. Vista Gallery, Deck 4, Midship.

DIDAJ: Deep Sea Jewellers Presents Treasures



Pearls "Queen of Gems - Gem of Queens." From Cleopatra's time to present - this is a must have!

Coral - A prized gemstone, naturally known for its fiery hue. Coral brings the ocean into the lives of jewelry lovers.



SEE THESE BREATH-TAKING COLLECTIONS TODAY AT WHITECAPS...

SHOPPING HOURS

Mickey's Mainsail	5:30 P.M. - 11:30 P.M.	Vista Gallery	5:45 P.M. - 11:00 P.M.
Sea Treasures	5:30 P.M. - 11:30 P.M.	Whitecaps	5:30 P.M. - 11:30 P.M.

DOE TO PORT REGULATIONS, WHEN THE SHIP IS DOCKED, THE STORES WILL REMAIN CLOSED

IMPORTANT INFORMATION

Security Notice

All Guests (including children) who wish to disembark the ship are required to present their Key to the World card at the gangway. A photo ID is also required for those Guests who are 18 years of age or older. Guests under the age of 18 are required to have a Parent, Guardian or other responsible adult sign an authorization form at the time it is given out if they wish to go ashore unaccompanied. Authorization forms are available at the gangways and Guest Services.

Cold and Flu Reminder

Please wash hands frequently and thoroughly, particularly before meals. Contact the Health Center by dialing 7-1923, should anyone in your party become ill.

Corridor Quiet Hours

As a courtesy to all our Guests, please recognize quiet hallway hours from 10:00 p.m. til 8:00 a.m.

Inclement Weather

For the safety of all Guests, outdoor events may be changed due to unforeseen weather conditions.

Environmental Message

With Disney's commitment to the Environment, please refrain from throwing anything over the Ship's side. Thank you!

No Reserved Seats Policy

As a courtesy to all our Guests, we kindly advise that the saving of seats is not permitted in the Walt Disney Theatre, and the saving of the sun loungers is not permitted on Deck 11, 12 and 13. Items left unattended will be returned to lost and found at Guest Services, Deck 3 Midship.

Smoking

For the comfort of our guests the following areas are designated as Smoking areas:
• Deck 13, forward, port side, by "Currents"
• Deck 12, aft, port side outdoor area that is accessible through the Meridian Lounge
• Deck 4, aft, port side from 6:00 p.m. to 6:00 a.m. only (all of deck 4 is no smoking from 6:00 a.m. to 6:00 p.m.)
- Smoking is permitted on stateroom verandahs. Smoking is prohibited inside all guest staterooms. Guests found smoking in their staterooms will be charged a \$250 stateroom recovery fee.

Walt Disney Theatre

Theatrical performances may use artificial fog, strobe lights, pyrotechnics and other special effects. For the safety of our performers and the comfort of those around you, the use of any photography, video recording devices or any electronic equipment is prohibited.

Verandah Safety

Please do not leave any combustible materials on your balcony when not present in your stateroom for safety reasons.